

# McKeon Farm Pollinator Meadows













Ridgefield, Connecticut

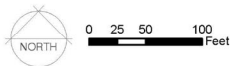
Landscape Design and Habitat  
Management to Support Pollinator  
Species At Risk in Western Connecticut

Commissioned by the Norwalk River Watershed  
Association and the Town of Ridgefield  
Conservation Commission

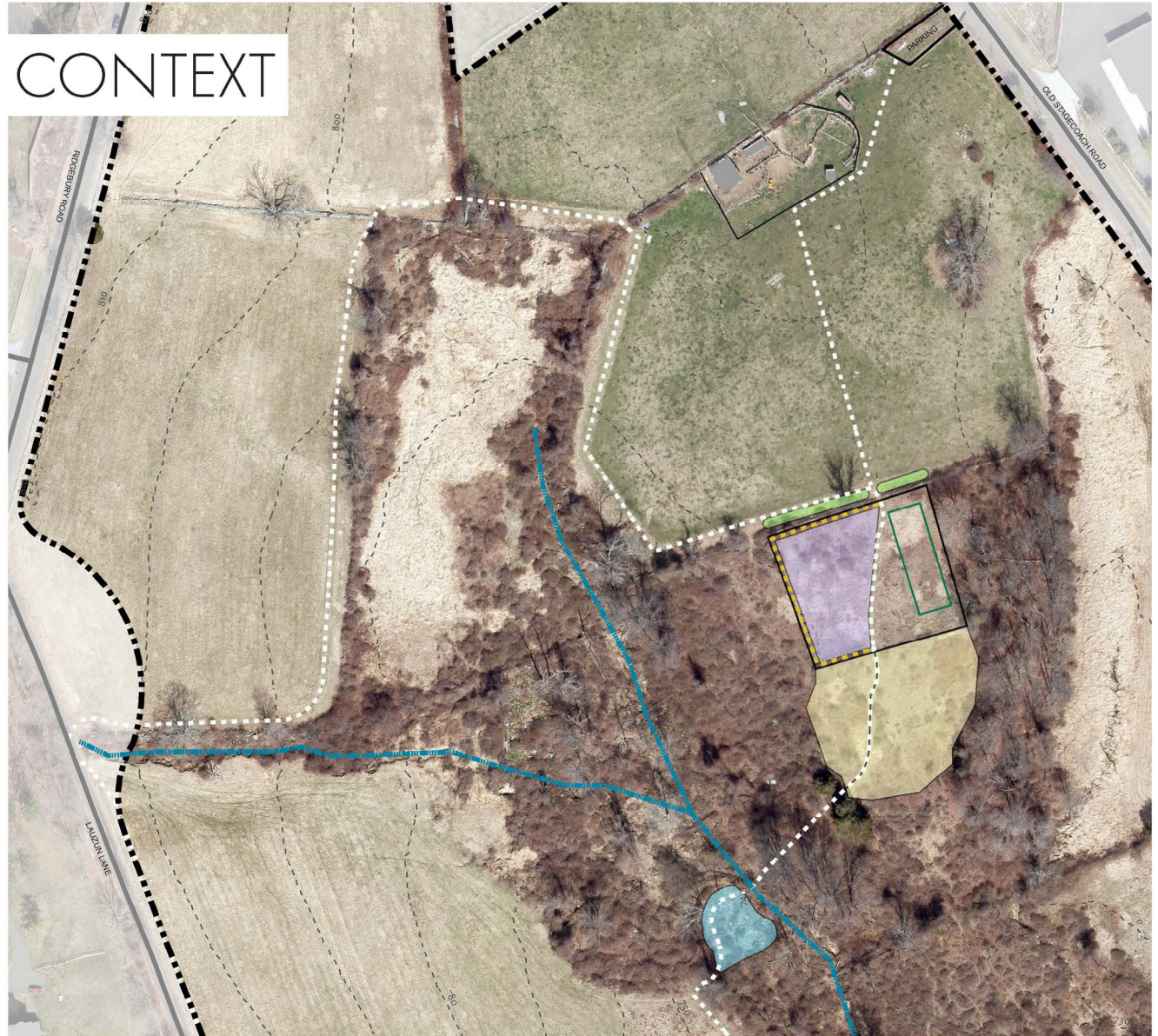
LANDSCAPE | INTERACTIONS  
16 Center Street #426  
Northampton, MA 01060  
landscapeinteractions.com

## LEGEND

-  Property Boundary
-  Buildings
-  Existing Vegetable Garden
-  Roads
-  Existing Trails
-  Contours 10 ft
-  Hedgerow Design Area
-  Upper Meadow Design Area
-  Lower Meadow Design Area
-  Wet Meadow Design Area
-  Meadow Trail Extension
-  Stream

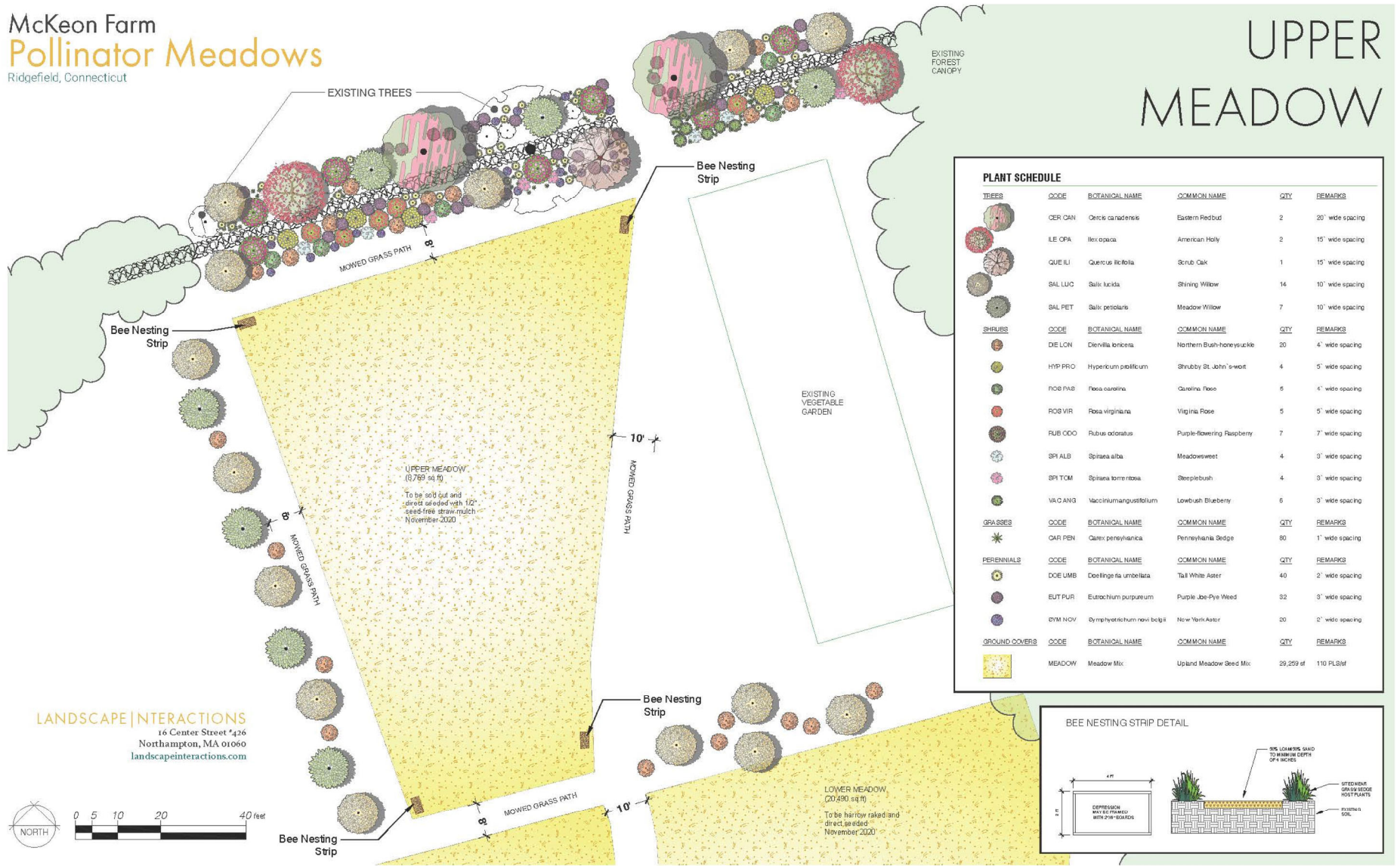


## CONTEXT



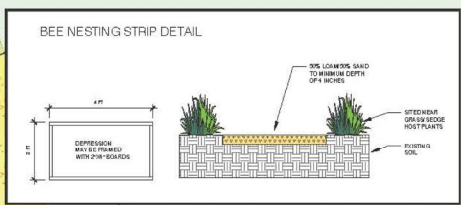
McKeon Farm  
**Pollinator Meadows**  
 Ridgefield, Connecticut

# UPPER MEADOW



**PLANT SCHEDULE**

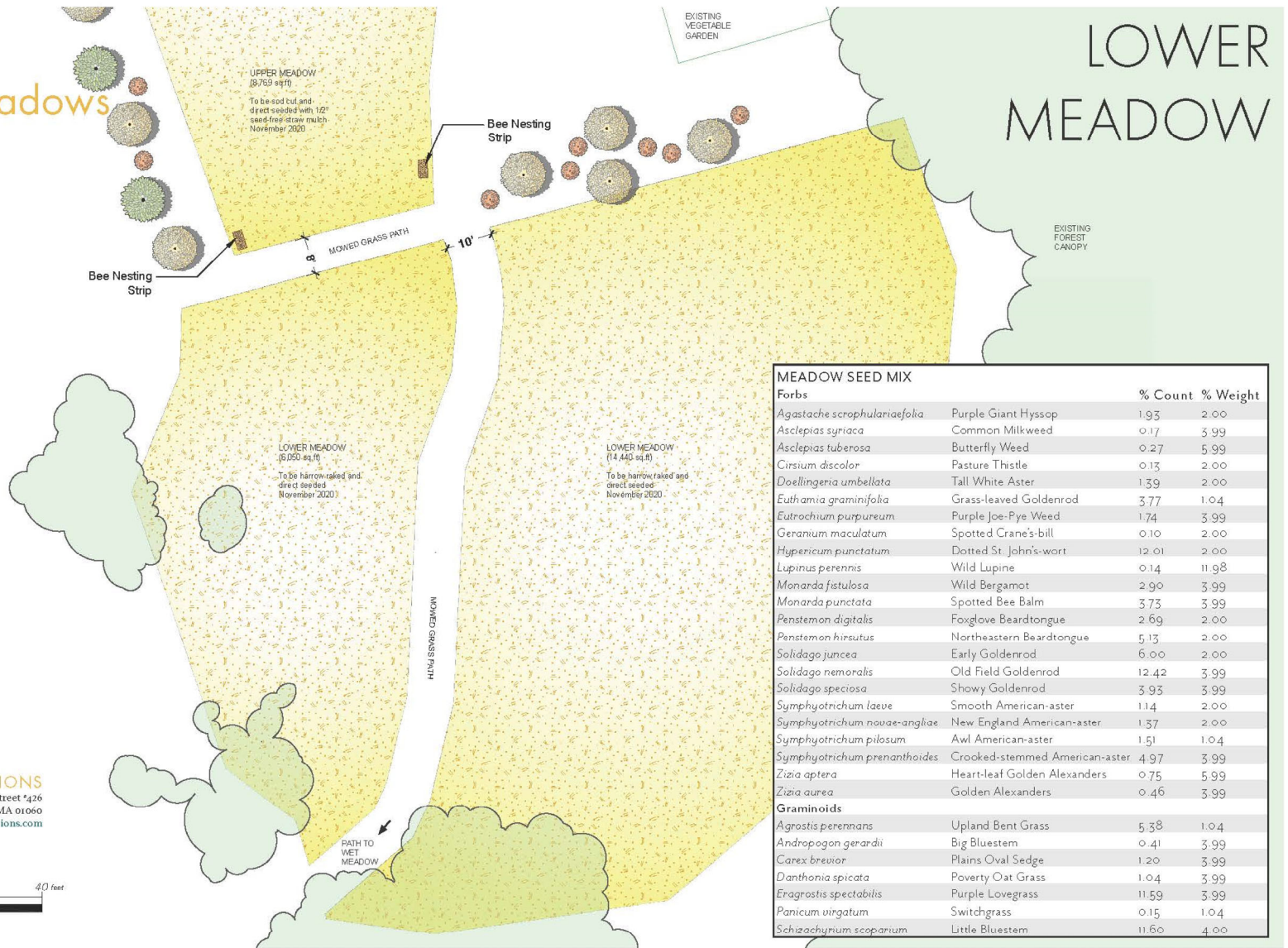
TREES	CODE	BOTANICAL NAME	COMMON NAME	QTY	REMARKS
	CER CAN	Ostrya canadensis	Eastern Redbud	2	20' wide spacing
	ILE OPA	Ilex opaca	American Holly	2	15' wide spacing
	QUE ILI	Quercus ilicifolia	Scrub Oak	1	15' wide spacing
	SAL LUC	Salix lucida	Shining Willow	14	10' wide spacing
	SAL PET	Salix petiolaris	Meadow Willow	7	10' wide spacing
SHRUBS	CODE	BOTANICAL NAME	COMMON NAME	QTY	REMARKS
	DIE LON	Diervilla lonicera	Northern Bush-honeysuckle	20	4' wide spacing
	HYP PRO	Hypericum prostratum	Shrubby St. John's-wort	4	5' wide spacing
	ROS CAR	Rosa carolina	Carolina Rose	6	4' wide spacing
	ROS VIR	Rosa virginiana	Virginia Rose	5	5' wide spacing
	RUB ODO	Rubus odoratus	Purple-flowering Raspberry	7	7' wide spacing
	SPI ALB	Spiraea alba	Meadowsweet	4	3' wide spacing
	SPI TOM	Spiraea tomentosa	Steeplebush	4	3' wide spacing
	VAC CAN	Vaccinium angustifolium	Lowbush Blueberry	6	3' wide spacing
GRASSES	CODE	BOTANICAL NAME	COMMON NAME	QTY	REMARKS
	CAR PEN	Carex pensylvanica	Pennsylvania Sedge	80	1' wide spacing
PERENNIALS	CODE	BOTANICAL NAME	COMMON NAME	QTY	REMARKS
	DOE UMB	Doellingeria umbellata	Tall White Aster	40	2' wide spacing
	EUT PUR	Eutrochium purpureum	Purple Joe-Pye Weed	32	3' wide spacing
	SYM NOV	Symphoricarpos novi-belgii	New York Aster	20	2' wide spacing
GROUND COVERS	CODE	BOTANICAL NAME	COMMON NAME	QTY	REMARKS
	MEADOW	Meadow Mix	Upland Meadow Seed Mix	29,259 sf	110 PL/SF



**LANDSCAPE INTERACTIONS**  
 16 Center Street #426  
 Northampton, MA 01060  
 landscapeinteractions.com



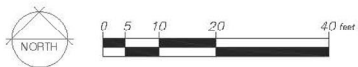
McKeon Farm  
**Pollinator Meadows**  
 Ridgefield, Connecticut



# LOWER MEADOW

MEADOW SEED MIX		
Forbs		% Count % Weight
<i>Agastache scrophulariaefolia</i>	Purple Giant Hyssop	1.93 2.00
<i>Asclepias syriaca</i>	Common Milkweed	0.17 3.99
<i>Asclepias tuberosa</i>	Butterfly Weed	0.27 5.99
<i>Cirsium discolor</i>	Pasture Thistle	0.13 2.00
<i>Doellingeria umbellata</i>	Tall White Aster	1.39 2.00
<i>Euthamia graminifolia</i>	Grass-leaved Goldenrod	3.77 1.04
<i>Eutrochium purpureum</i>	Purple Joe-Pye Weed	1.74 3.99
<i>Geranium maculatum</i>	Spotted Crane's-bill	0.10 2.00
<i>Hypericum punctatum</i>	Dotted St. John's-wort	12.01 2.00
<i>Lupinus perennis</i>	Wild Lupine	0.14 11.98
<i>Monarda fistulosa</i>	Wild Bergamot	2.90 3.99
<i>Monarda punctata</i>	Spotted Bee Balm	3.73 3.99
<i>Penstemon digitalis</i>	Foxglove Beardtongue	2.69 2.00
<i>Penstemon hirsutus</i>	Northeastern Beardtongue	5.13 2.00
<i>Solidago juncea</i>	Early Goldenrod	6.00 2.00
<i>Solidago nemoralis</i>	Old Field Goldenrod	12.42 3.99
<i>Solidago speciosa</i>	Showy Goldenrod	3.93 3.99
<i>Symphotrichum laeve</i>	Smooth American-aster	1.14 2.00
<i>Symphotrichum novae-angliae</i>	New England American-aster	1.37 2.00
<i>Symphotrichum pilosum</i>	Awl American-aster	1.51 1.04
<i>Symphotrichum prenanthoides</i>	Crooked-stemmed American-aster	4.97 3.99
<i>Zizia aptera</i>	Heart-leaf Golden Alexanders	0.75 5.99
<i>Zizia aurea</i>	Golden Alexanders	0.46 3.99
Graminoids		
<i>Agrostis perennans</i>	Upland Bent Grass	5.38 1.04
<i>Andropogon gerardii</i>	Big Bluestem	0.41 3.99
<i>Carex brevior</i>	Plains Oval Sedge	1.20 3.99
<i>Danthonia spicata</i>	Poverty Oat Grass	1.04 3.99
<i>Eragrostis spectabilis</i>	Purple Lovegrass	11.59 3.99
<i>Panicum virgatum</i>	Switchgrass	0.15 1.04
<i>Schizachyrium scoparium</i>	Little Bluestem	11.60 4.00

LANDSCAPE|INTERACTIONS  
 16 Center Street #426  
 Northampton, MA 01060  
 landscapeinteractions.com



McKeon Farm  
**Pollinator Meadows**  
 Ridgefield, Connecticut

# WET MEADOW

## Vegetative Assessment

The wet meadow, bisected by a footpath and located to the southwest of a perennial stream flowing northwest to southeast, is largely a somewhat intact native plant community. Some invasives are beginning to encroach, including a number of large multiflora rose (*Rosa multiflora*). Privet (*Lingustrum* spp.) are also present in low density throughout the meadow.

The dominant species within the open meadow are a mix of both native and non-native grasses and sedges. Native graminoids include bottlebrush sedge (*Carex comosa*) and big bluestem (*Andropogon gerardii*). Additionally, a number of goldenrods and asters are present, including lance-leaved American-aster (*Symphotrichum lanceolatum*), tall goldenrod (*Solidago altissima*), smooth goldenrod (*Solidago gigantea*), common wrinkle-leaf goldenrod (*Solidago rugosa*), and grass-leaved goldenrod (*Euthamia graminifolia*). Crooked-stemmed American-aster (*Symphotrichum prenanthoides*) is sparsely present, found mainly along the trail. A wider variety of native forbs are also present in very low numbers, including approximately 3-4 blue vervain (*Verbena hastata*); a single white vervain (*Verbena urticifolia*); and a single swamp aster (*Symphotrichum puniceum*). A single spotted St. John's-wort (*Hypericum punctatum*) was also found.

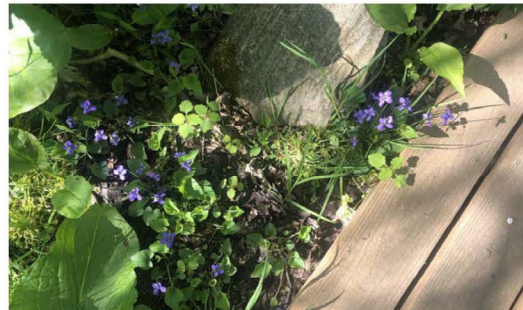
In the center of the wet meadow is a dense patch of rice cutgrass (*Leersia oryzoides*), which covers approximately 15% of the open section of the meadow. Although native, rice cutgrass can be somewhat weedy and aggressive and could threaten the establishment of new plantings.

A dense coverage of vines and shrubs exists on both western and eastern portions of the meadow, including native wild grape (*Vitis* spp.) and poison ivy (*Toxicodendron radicans*); as well as invasive oriental bittersweet (*Celastrus orbiculatus*) and porcelain berry (*Amur peppervine*).

To the north, the meadow transitions to woodland, with a stand of mature gray willow (*Salix cinerea*) growing along the stream — an important source of early season pollen for threatened bees, as well as host plant for a number of at-risk lepidoptera. Along the edge of this willow, a dense coverage of invasives exists, including privet, multiflora rose and oriental bittersweet; as well as native Virginia creeper (*Parthenocissus quinquefolia*), poison ivy and bramble (*Rhus* spp.). Black cherry (*Prunus serotona*) saplings are also present. Moving under forest cover, the willow gives way to mature pignut hickory (*Carya glabra*) and red maple (*Acer rubrum*). The shady understory along the stream is predominantly composed of common jewelweed (*Impatiens pallida*) — an important nectar source for at-risk bumblebees, as well as common violet (*Viola sororia*), host plant for several threatened butterfly species. More invasives including oriental bittersweet and Japanese barberry (*Berberis thunbergii*) are found in this moist shaded area. Traveling uphill toward the lower meadow, the understory consists of pignut hickory, red maple and oak saplings, wild grape as well as more invasives including multiflora rose, burning bush (*Euonymus alatus*), Japanese barberry, garlic mustard (*Alliaria petiolata*) and oriental bittersweet.



Above, the wet meadow at McKeon Farm is largely comprised of native plants. Below, common violet (*Viola sororia*) growing alongside a footbridge crossing the perennial stream upslope.



## PLANT SCHEDULE

		Quantity	Exposure	Size (HxW)	Spacing
<b>Trees</b>					
<i>Salix discolor</i>	Pussy Willow	4	Full Sun	15x8'	6-8'
<i>Salix lucida</i>	Shining Willow	4	Full Sun	20x10'	8-10'
<b>Shrubs</b>					
<i>Cephalanthus occidentalis</i>	Common Buttonbush	8	Full Sun, Part-Shade	8x6'	4-6'
<i>Rosa Nitida</i>	Shining Rose	6	Full Sun	3x5'	2-3'
<i>Rosa Palustris</i>	Swamp Rose	10	Full Sun	6x6'	4-6'
<i>Vaccinium corymbosum</i>	Highbush Blueberry	10	Full Sun, Part-Shade		
<b>Forbs</b>					
<i>Asclepias incarnata</i>	Swamp Milkweed	21	Full Sun, Part-Shade	5x2'	1-2'
<i>Eutrochium dubium</i>	Coastal Plain Joe-Pye Weed	20	Full Sun, Part-Shade	5x3'	2-3'
<i>Mimulus ringens</i>	Allegheny Monkey flower	15	Full Sun, Part-Shade	3x2'	1-2'
<i>Physostegia virginiana</i>	Obedient False Dragonhead	10	Full Sun, Part-Shade	4x2.5'	1-2.5'
<i>Pontederia cordata</i>	Pickereelweed	10	Full Sun	4x2'	1-2'
<b>Graminoids</b>					
<i>Carex stricta</i>	Tussock Sedge	20	Full Sun	3x2'	1-2'
<i>Rumex spp.</i>	Water Dock (native)	20	Full Sun, Part-Shade	Varies	1-3'

## Planting Recommendations

It is strongly recommended that all new planting areas in the wet meadow first be cleared with either a weed whacker or by manual pulling or grubbing. Dominant invasives such as multiflora rose, privet, bittersweet and barberry should be thoroughly cut back and roots dug out, in order to open space for the introduction of new plant species. The same can be said for the large patches of rice cutgrass.

New plantings could be clustered in areas where invasives have been removed, in order to dissuade regrowth. All plantings should be flagged, staked and caged, in order to prevent deer browse and allow for future identification. New plants should be monitored closely for 1-2 growing seasons and weeded regularly, in order to ensure that they are not out-competed by existing, more well established plant species.

**LANDSCAPE|INTERACTIONS**  
 16 Center Street #426  
 Northampton, MA 01060  
[landscapeinteractions.com](http://landscapeinteractions.com)